



W A V E R L E Y
COUNCIL

COUNCIL MEETING

ADDITIONAL BUSINESS

7.00PM, TUESDAY 2 JUNE 2020

Waverley Council
PO Box 9
Bondi Junction NSW 1355
DX 12006 Bondi Junction
Tel. 9083 8000
E-mail: info@waverley.nsw.gov.au

**AGENDA
ADDITIONAL BUSINESS**

7. Reports

CM/7.6/20.06 **Rose Bay Secondary College - Temporary drop off/pick up zones following relaxation of COVID-19 restrictions3**

REPORT
CM/7.6/20.06

Subject: Rose Bay Secondary College - Temporary drop off/pick up zones following relaxation of COVID-19 restrictions

TRIM No: A14/0145

Author: Calum Hutcheson, Service Manager, Traffic and Transport
Nikolaos Zervos, Manager, Asset Systems and Planning

Director: Emily Scott, Director, Community, Assets and Operations

RECOMMENDATION:

That Council:

1. Installs a 20 metre "No Parking, 8AM – 9AM, 2:30PM – 4:00PM, School Days Only" on the eastern side of Hardy Street zone north of the No Stopping Zone on the approach to the marked pedestrian crossing as shown in Figure 4.
2. Extends the existing 14.5 metres of "No Parking, 8AM – 9AM, 2:30PM – 4:00PM, School Days Only" on the western side of Hardy Street by an additional 25 metres to the south as shown in Figure 4.
3. Converts 21 metres of the 94 metre "Bus zone, 8AM – 9AM, 2:30PM – 4:00PM, School Days Only" bus zone to "No Parking, 8AM – 9AM, 2:30PM – 4:00PM, School Days Only".
4. Notifies the immediately affected residents and the school of the temporary changes.
5. Delegates authority to the Executive Manager, Infrastructure Services, to adjust the length and duration of, or remove the additional No Parking restrictions, and reinstate current restrictions, as necessary.
6. Requires Council Officers to complete a review of the operation of the parking 3 months after implementation and prepare a report for the traffic committee reviewing the status of the parking demand at that time and advise whether some or all of the additional "No Parking" should be removed, and current restrictions reinstated.

1. Executive Summary

Implementation of temporary pick up / drop off zones as recommended for Hardy Street, Dover Heights outside Rose Bay Secondary College. The zones are required to clear congestion and facilitate bus access to the school following the return of students after relaxation of health restrictions.

This matter was considered by the Waverley Traffic Committee at its meeting held on 28 May 2020 (TC/V.06/20.05). The recommendation above was endorsed by the Traffic Committee. The recommendations of the May Traffic Committee meeting are usually considered by Council at a later date. This matter has been brought forward as an additional item to this Council meeting due to the urgency of its implementation.

Rose Bay Secondary College is located at Hardy Street with an access point used for assisted transport vehicles at the end of the cul-de-sac on Nancy Street and a pedestrian link off Chaley Street. The school has experienced major changes in travel patterns following the return all students on 25 May 2020.

The school enrolment for 2020 is 1,370 students. This is forecast to rise to 1,430 student in 2021. The school has advised that normally 60% of students (825 students) would commute to and from school via school buses on a daily basis. This reduced to 15% following return of some students to school (years 7 and 12). The return of all students has exacerbated conditions.

11 new drop off / pick up 2 minute parking spaces are recommended along Hardy Street from 8.00 to 9.00 am and 2.30 to 4.00 pm on school days.

These new drop off / pick up 2 minute parking spaces will replace 7 unrestricted car spaces and 1 bus space. There will be no impacts outside the hours of 8.00 to 9.00 am and 2.30 to 4.00 pm, school days.

State Transit have advised "STA raise no objection to this arrangements for the next 3 months however once circumstances change we request the school bus re-instated".

The restrictions will be in place on a temporary basis for a minimum period for 3 months. A report on the impact of the restrictions and returning parking controls back to the current situation will be presented to the Waverley Traffic Committee for consideration. Priority will be given to re-instatement of the bus parking space.

2. Introduction/Background

Council officers, TfNSW (RMS), and NSW Police met with the school principal on site on Tuesday 26 May 2020. Poor traffic conditions were observed on Hardy Street and Chaley Street. This was due to large volumes of two way traffic associated with parents dropping of students at the school.

Parents were observed to drop off their children from various locations including:

- parking at the kerb (low numbers),
- letting children off while stopped in the travel lane (high numbers), and
- dropping off in the bus zone on Hardy Street (high numbers).

The congestion results in queuing of around 30 vehicles (including buses) back down Hardy Street (to the south). The queuing delays drivers in general and also delays bus access to the bus zone.

Additional drop off/pick up on-street parking is required to clear congestion and facilitate bus access to the school.

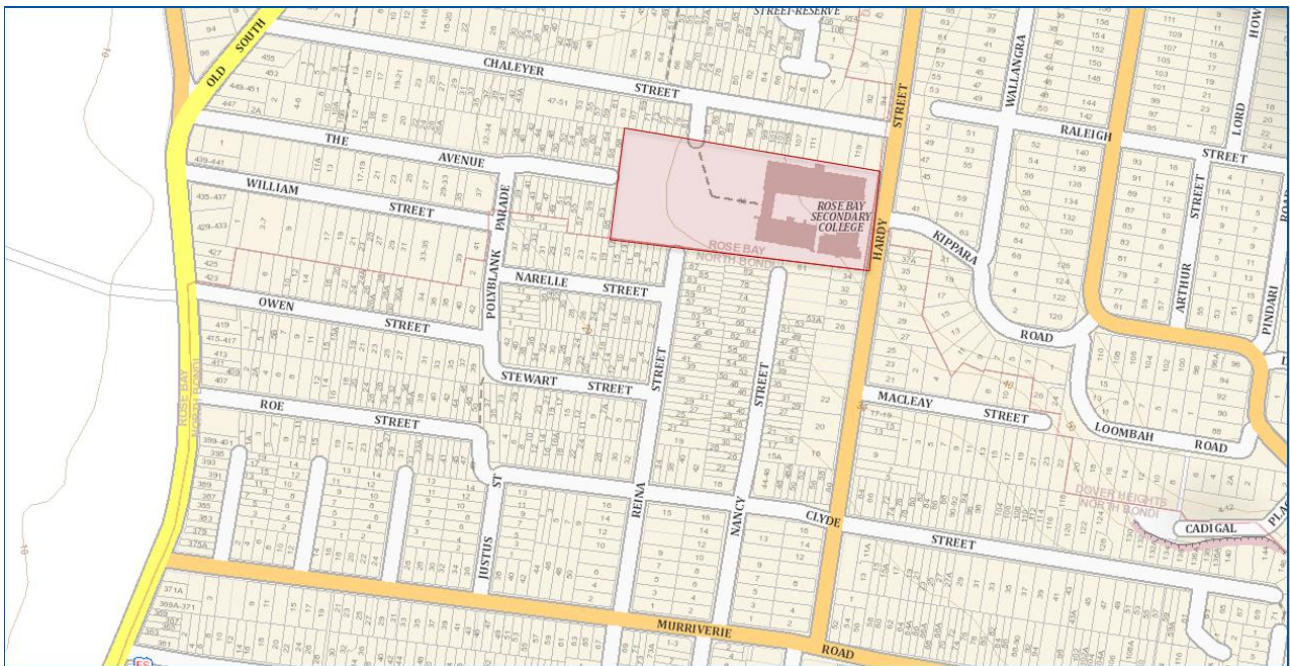


Figure 1: Location of Rose Bay Secondary School

3. Relevant Council Resolutions

Nil.

4. Discussion

Three key areas have been identified for increased drop off/pick up 2 minute parking. They are:

1. The eastern side of Hardy Street, north of the school.
2. The western side of Hardy Street, within part of the 94 metre bus zone adjacent to the school.
3. The western side of Hardy Street, south of the school.

3.1 Location 1 - the eastern side of Hardy Street, north of the school

There is a 20 metre section of unrestricted kerbside parking on the eastern side of Hardy Street between the No Stopping zone for the pedestrian crossing and a narrowing of Hardy Street to the north. It can accommodate up to three cars (usually two cars and a boat are parked there).

Converting this unrestricted parking to 2 minute parking before and after school will allow parents from the north to drop off and pick up their children avoiding congestion to the south.

3.2 Location 2 – the western side of Hardy Street, along the 94 metre bus zone adjacent to the school

The 94 metre bus zone can accommodate up to 5 buses at a time before and after school. A maximum of 2 buses have been observed on site in the morning. More buses queue in the afternoon. Bus departure times have been staggered to accommodate this.

It is recommended to reduce the length of the bus zone so that it can accommodate up to 4 buses at any one time. This results in 21 metres of parking that can be converted to 2 minute parking before and after school. This can accommodate 4 cars at any one time.

State Transit has advised that it raises no objection to this arrangement for the next 3 months. However once circumstances change, they request that the school bus zone is re-instated.

3.3 Location 3 - the western side of Hardy Street, south of the school

There is a 14.5 metre no parking zone on the western side of Hardy Street, just south of the school.

It is recommended to extend this zone by 25 metres to the south. This will displace 4 unrestricted car parking spaces.

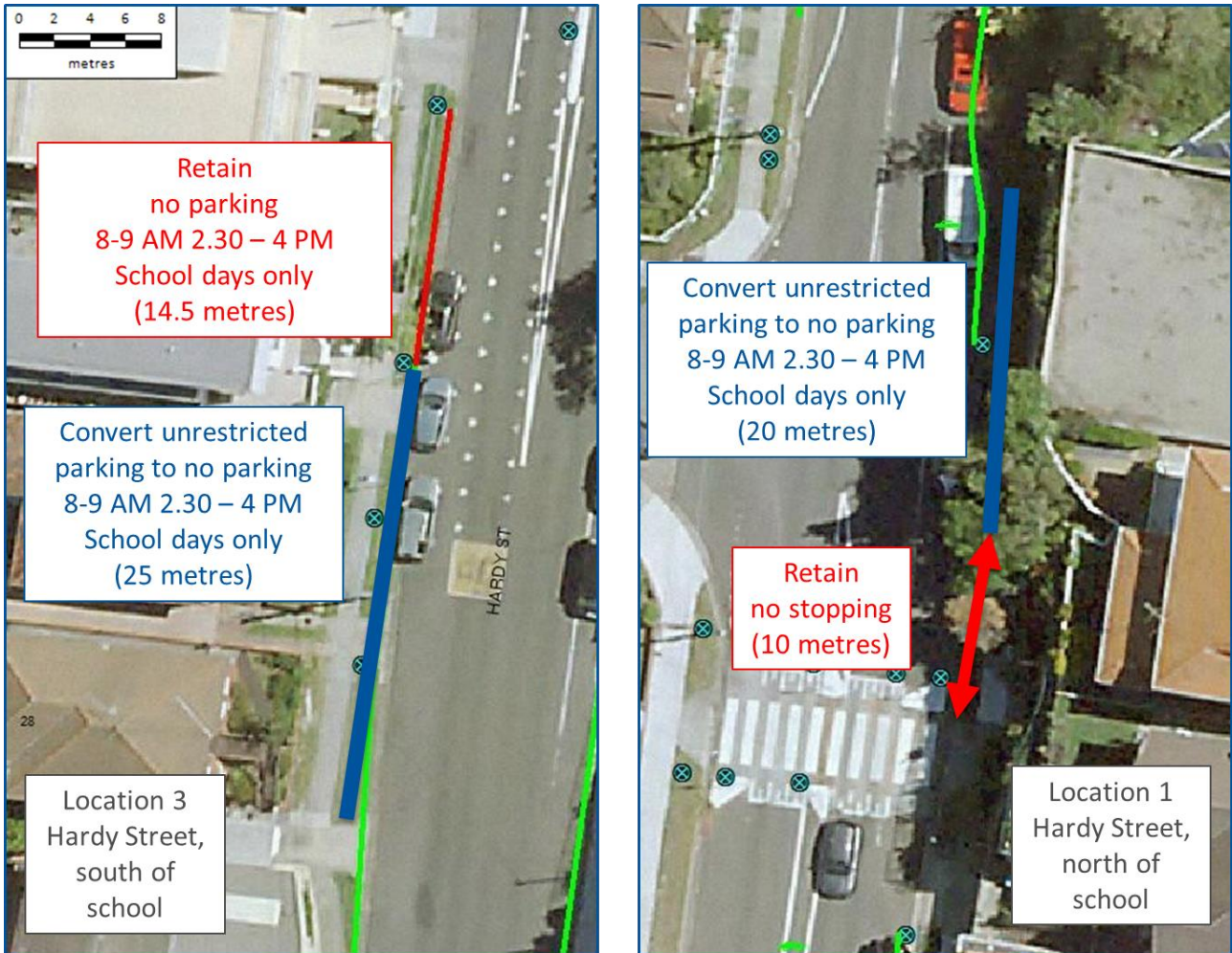


Figure 4: Recommended changes to parking south and north of the school (locations 3 and 1)

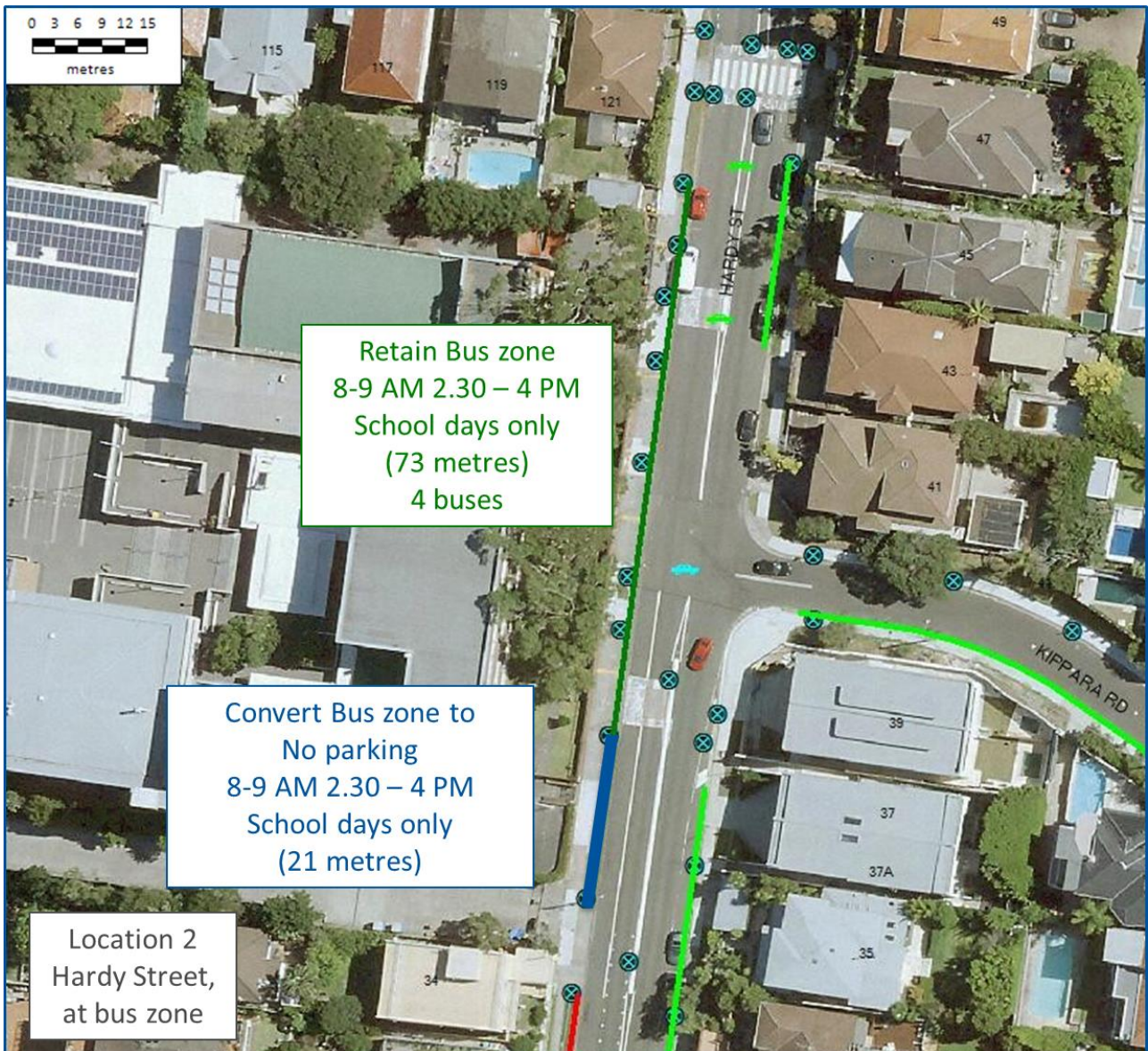


Figure 5: Recommended changes to parking within the bus zone on Hardy Street (location 2)

3.5 Signage

Standard TfNSW (RMS) signage will be installed. It will include regulatory No Parking signs with a supplementary kiss and ride sign on the same post. Signage designs are shown below.

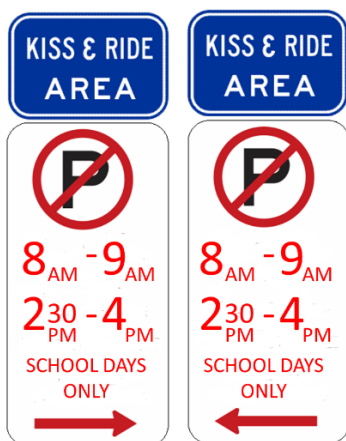


Figure 6: Signage design

5. Financial impact statement/Time frame/Consultation

Council will supply and install the signs or remove signs with funds from existing budgets.

6. Conclusion

The installation of extended section of drop off / pick up on-street on Hardy Street, Dovers heights is required to accommodate the increase in numbers of parents dropping off and picking up students attending Rose Bay Secondary College.

The changes in parking restrictions will result in:

1. The loss of 7 unrestricted parking spaces from 8.00 to 9.00 am and 2.30 to 4.00 pm on school days.
2. The loss of 1 bus parking space from 8.00 to 9.00 am and 2.30 to 4.00 pm on school days.
3. The gain of 11 drop off / pick up spaces from 8.00 to 9.00 am and 2.30 to 4.00 pm on school days.

TfNSW (RMS), NSW Police, and State Transit have advised they have no objection to the recommendation.

The Waverley Traffic Committee meeting held on 28 May 2020 has endorsed the recommendation.

7. Attachments

Nil.